



**MISC**  
musashi industrial and starflight concern  
**RAZUK**

Ship enthusiasts may look at the MISC Razor and think, 'haven't I seen you before?' The simple answer is 'yes,' but the Razor is anything but simple. The Razor's story begins in 2833 when then-CEO, Kori Desmon, decided to try and expand MISC's ship manufacturing focus from heavy, industrial ships into lighter, more maneuverable ones. He set his sights on the dream of a 'MISC ship taking the Murray Cup' as a definitive way to establish the company's new direction. The result was the Daedalus. Although the Daedalus competed, Desmon was never able to see that dream of a championship come to fruition. MISC engineers recently decided to resurrect the project, incorporating modern design sensibilities as well as new Xi'An engine tech into the original hull plans and take another run at achieving MISC's unrealized racing aspirations.

We are proud to unveil the new MISC RAZOR.





RAZER  
performance





NO COMPROMISE  
NO SETTLING JUST  
PURE  
EXCELLENCE

RAZOR

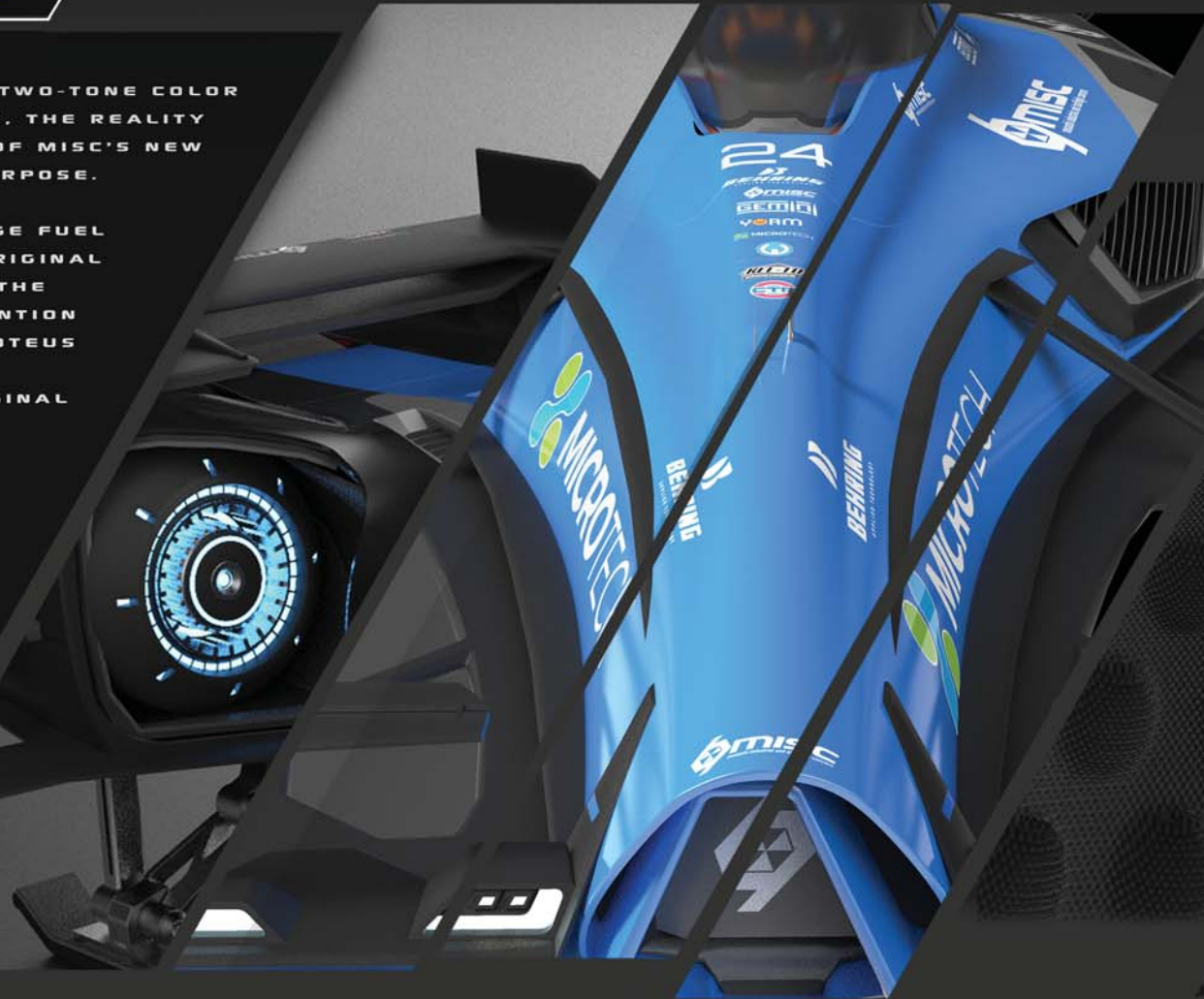


## NOT JUST A PRETTY FACE

WHILE MANY MAY VIEW THE RAZOR'S TWO-TONE COLOR SCHEME AS A BOLD AESTHETIC CHOICE, THE REALITY IS THAT THE MATTE BLACK SECTIONS OF MISC'S NEW RACER FULFILL A VERY DIFFERENT PURPOSE.

WELCOME TO PROTEUS, A CUTTING EDGE FUEL COLLECTION SYSTEM. PART OF THE ORIGINAL DAEDALUS SHIP DESIGN, AND ONE OF THE ELEMENTS THAT ATTRACTED THE ATTENTION OF TODAY'S MISC ENGINEERS, THE PROTEUS SYSTEM NEVER QUITE ACHIEVED THE LEVELS OF EFFICIENCY THAT THE ORIGINAL ENGINEERS INTENDED. THANKS TO DEVELOPMENTS IN SHIP-BUILDING TECHNOLOGY AND DEVELOPED IN PARTNERSHIP WITH OUR RIHLAH FACILITY, PROTEUS IS READY.

CONSTRUCTED OUT OF A COMPOSITE WEAVE, THE ENTIRE SURFACE AREA IS FULL WITH TINY OPENINGS THAT COLLECT HYDROGEN WHILE IN FLIGHT. ALTHOUGH THE RAZOR COMES WITH STANDARD FUEL INTAKES, THE PROTEUS SYSTEM INCREASES THE SURFACE AREA OF THE COLLECTION POINTS, ALLOWING YOU TO HIT THAT BOOST OF SPEED QUICKER.



DETAILS

"I didn't know what to expect hopping into the cockpit of a MISC Razor. I mean, how do you go from a Starfarer to a racer? When I hit the throttle, I knew. Very, very quickly."

- TREVOR YUMON, MURRAY CUP WINNER 2939







## OPERATOR-FOCUSED COCKPIT

Like all MISC ships, operator safety and comfort are equally as important as durability and function. Our designers spent months testing various configurations to find the optimal arrangement for operator efficiency, resulting in a cockpit design that's familiar and intuitive. The Razor features a OS-4K pilot seat equipped with NeoPrex memory foam cushions to provide maximum comfort for longer distances as well as providing ultimate protection in case of sudden impact.



STAY CLEAR

CUT THE COMPETITION





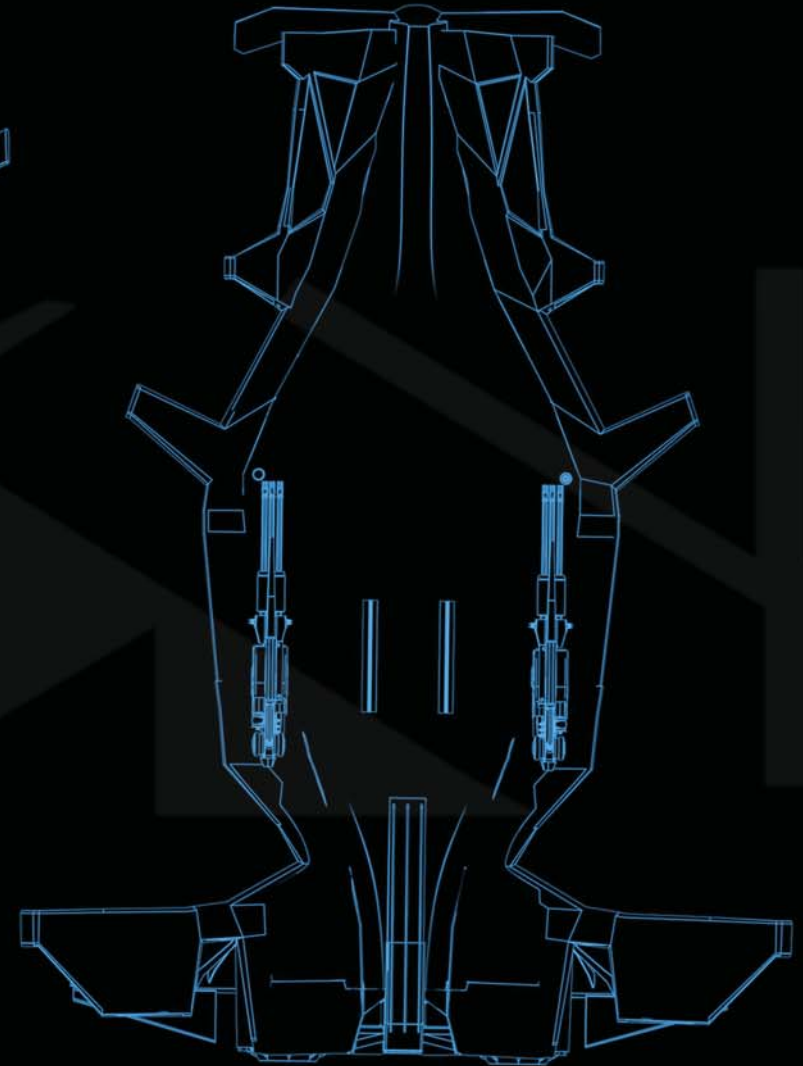
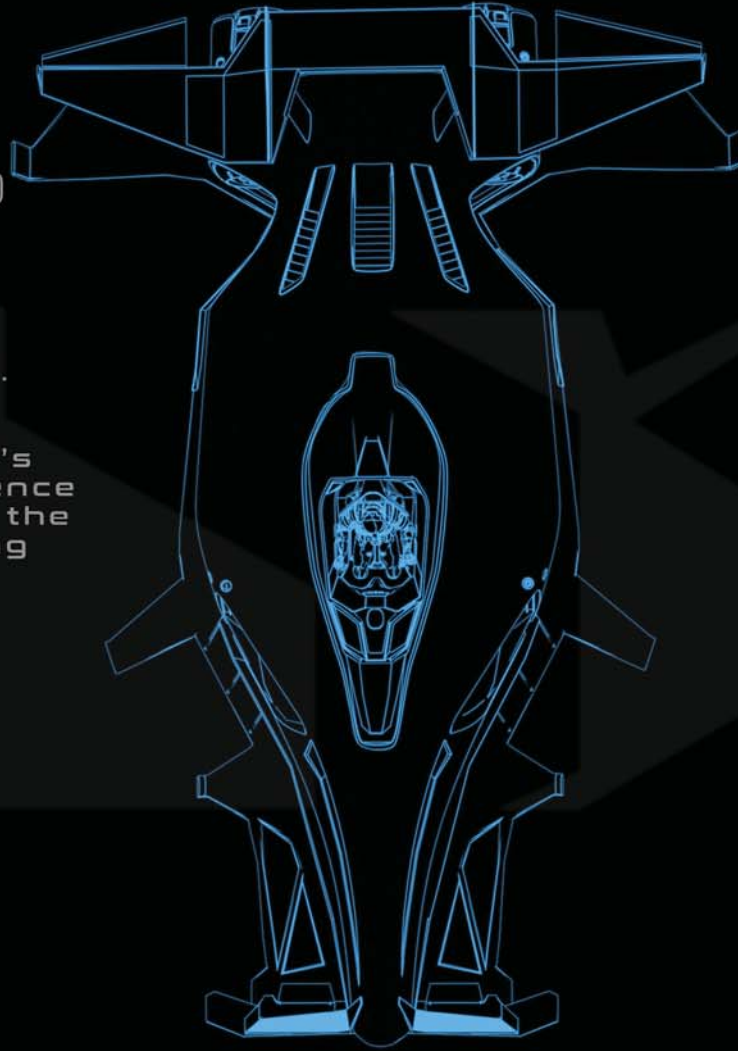
.UNPARALLELED SPEED.

.MISC DEPENDABILITY.

CLASS: Racing  
CREW: Single STATIONS: 1 (Pilot)  
LENGTH: 11m WIDTH: 7.95m (at widest)  
HEIGHT: 2.41m (w/skids)/2.03m (w/o skids)  
MASS (empty): 6900 kg  
HARDPOINTS: 2 x Size 2  
LANDING SYSTEM: Skids

The Razor is designed to redefine  
a next generation endurance racer.

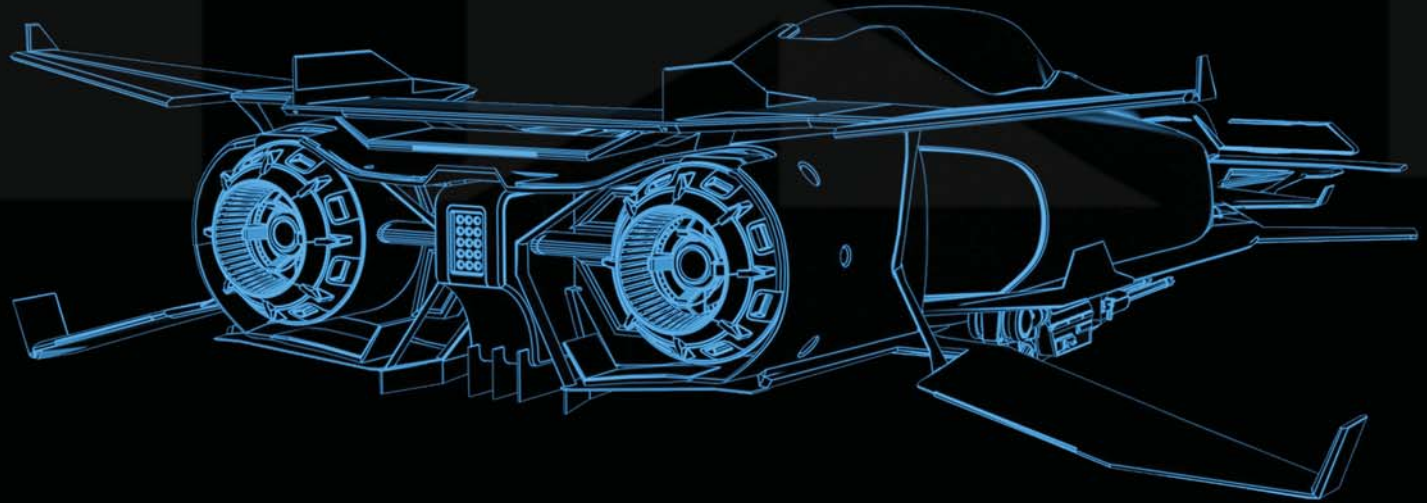
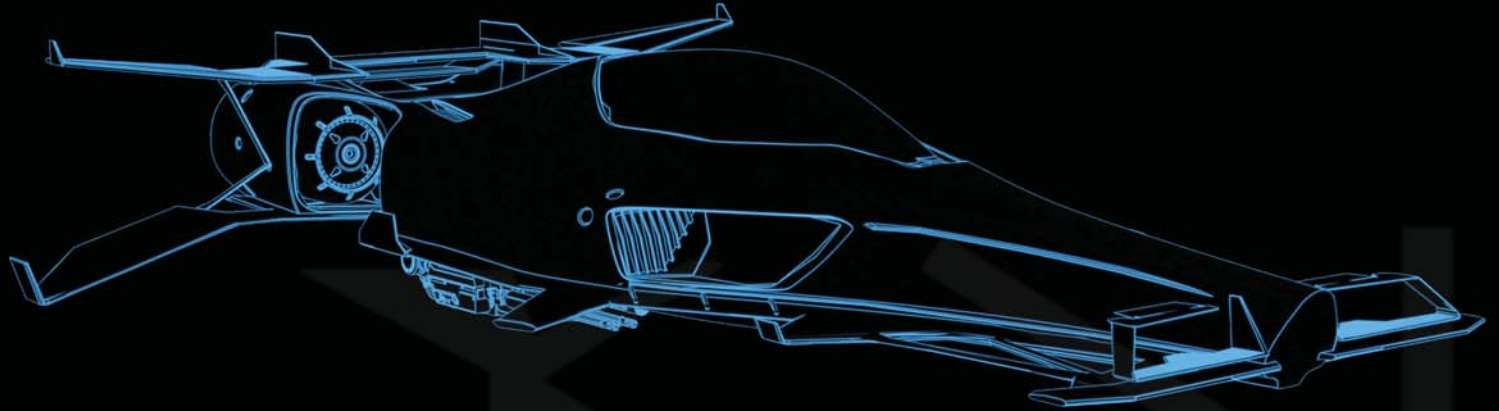
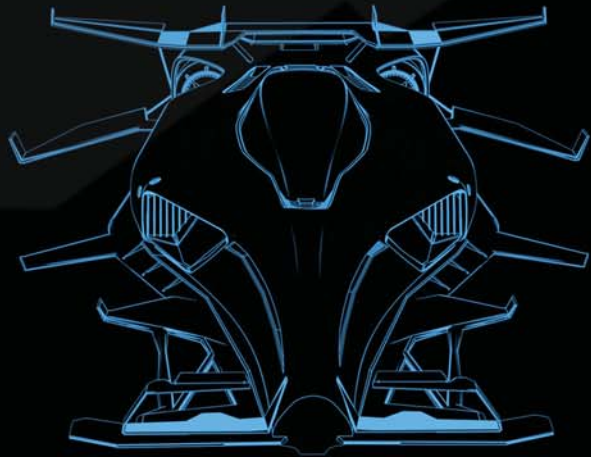
Tapping into two centuries of MISC's  
award-winning engineering experience  
and cutting edge Xi'An technology, the  
Razor's powerful twin engines along  
with MISC's proprietary Daelight  
thruster technology provide an  
incredible combination  
of power and efficiency.





CLASS: Racing  
CREW: Single STATIONS: 1 (Pilot)  
LENGTH: 11m WIDTH: 7.95m (at widest)  
HEIGHT: 2.41m (w/skids)/2.03m (w/o skids)  
MASS (empty): 6900 kg  
HARDPOINTS: 2 x Size 2  
LANDING SYSTEM: Skids

Designed and built at our Rihlah facility under the supervision of veteran Ship Engineer Lyr To-Ko, the Daelight technology raises the bar for fuel efficiency. Coupled with the Razor's Proteus fuel collection material, it means that you can burn faster for longer.



RAZOR







MISC would like to thank our generous sponsors  
for the 2947 **MISC RACING TEAM**



CRY-ASTRO STATION





©2946 Musashi Industrial and Starflight Concern.

All logos, imagery, text and designs are protected and registered trademarks of MISC and its affiliates. All product names, logos and brands are property of their respective owners and used with permission. All technical information and data were performed during controlled testing and are considered accurate at time of publication. Some images may show optional equipment, please consult your local dealer for your model's loadout.

MUSASHI INDUSTRIAL and STARFLIGHT CONCERN Marketing Dept. 1611 Terashi Square Bldg 6728c Fujin City, Saisei, Centauri

Xi'an Registry: ExtraEmp Division: MISC Rihlah/Shorvu

Star Citizen ® is a registered trademark of Cloud Imperium Games Corp.